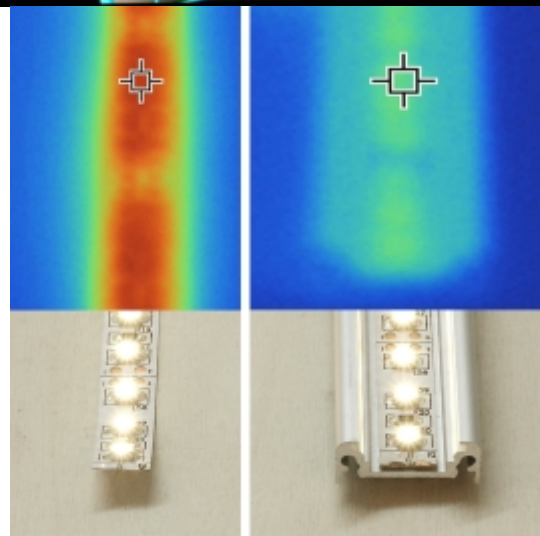
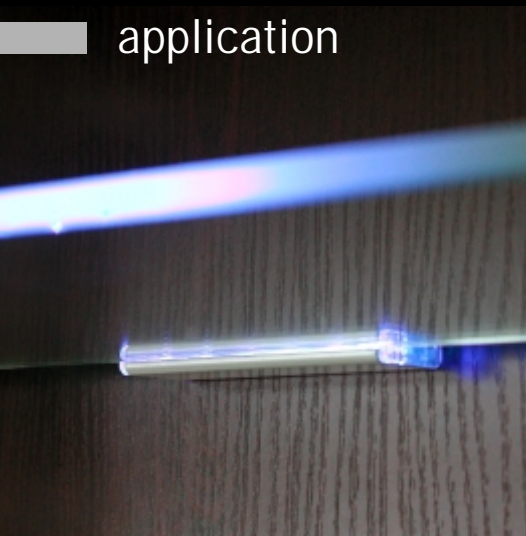


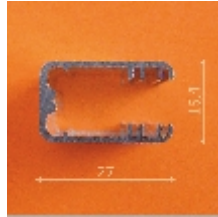
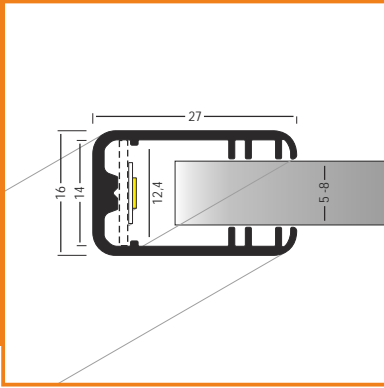
profile LED MIKRO-LINE



application

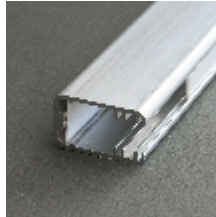


profile LED MIKRO-LINE



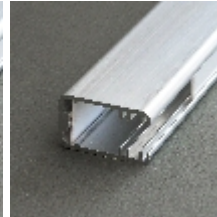
lightens 8 mm glass

standard lengths: 1000, 2000mm;
max. length 4000mm;
length above 2000mm - own collection



raw

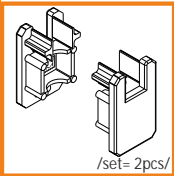
1000mm
2000mm



anodized

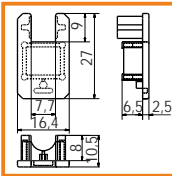
1000mm
2000mm

endinas

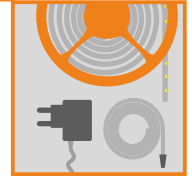


ending M-L
transparent

70330000

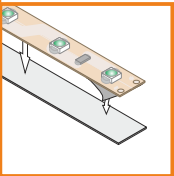


ENDING THICKNESS INCREASES
THE LENGTH OF THE PROFILE

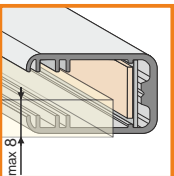
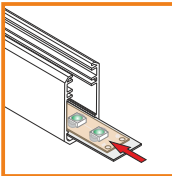


LED strip + cable
+ power supply

mounting



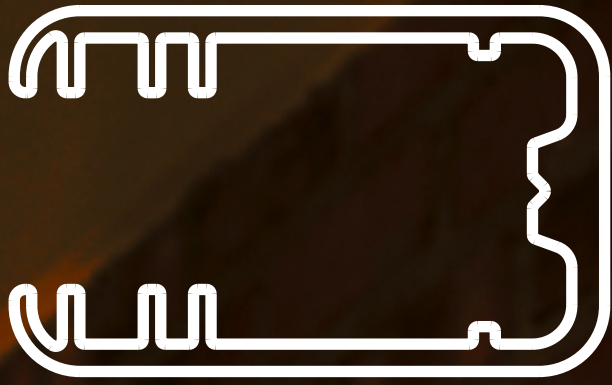
mounting LED stripe



placement glass
in the profile*

*profile includes
insert for
mounting

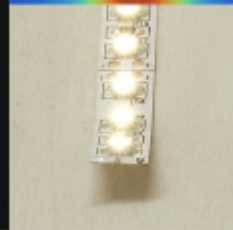
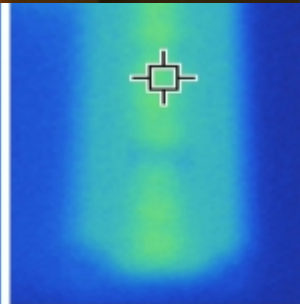
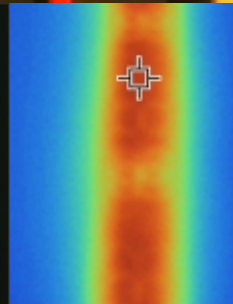
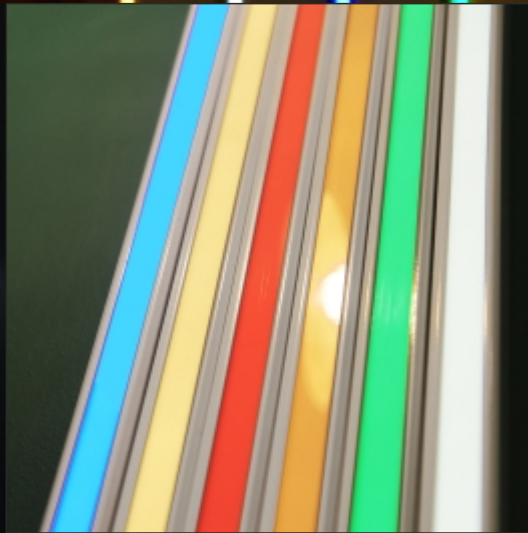




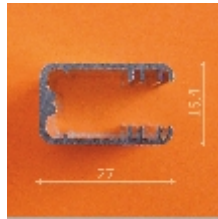
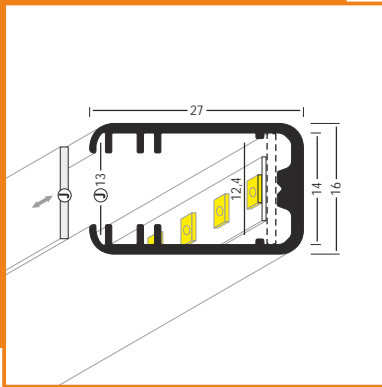
profile LED
MIKRO-
LINE LINIA



application

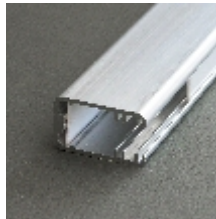


profile LED MIKRO LINE-LINIA J



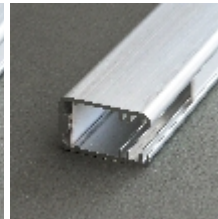
the profile gives effect of lighting line;
various mounting possibilities:
flat, back, side;

standard lengths: 1000, 2000mm;
max. length 4000mm;
length above 2000mm - own collection



raw

1000mm
2000mm



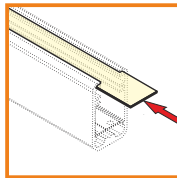
anodized

1000mm
2000mm

covers



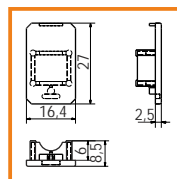
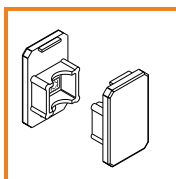
cover J
white



endings



ending M-LL
transparent

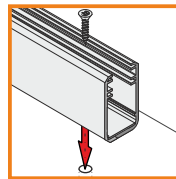
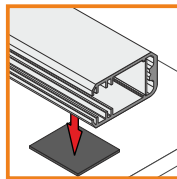
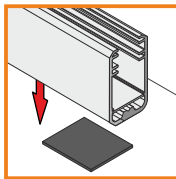


ENDING THICKNESS INCREASES
THE LENGTH OF THE PROFILE

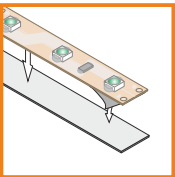
mounting



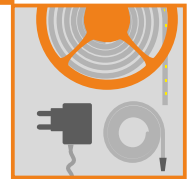
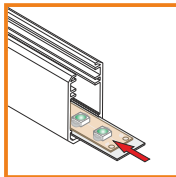
two-sided adhesive tape



screw



LED stripe mounting



LED stripe + cable
+ power supply

