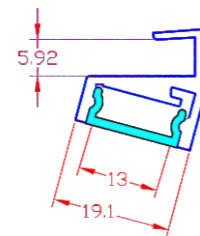


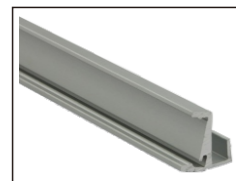


SPECIFICATIONS

- > Match Flexible LED Strips: Up to 12mm wide.
- > Material: Anodized Aluminum Extrusion.
- > Cover: Transparent, Frosted, Milky PC cover.
- > Dimension: 5.9X19mm.
- > Length: 1 to 3 meter long.
- > Mounting: For 6mm glass shelf.



Standard accessories



Profile



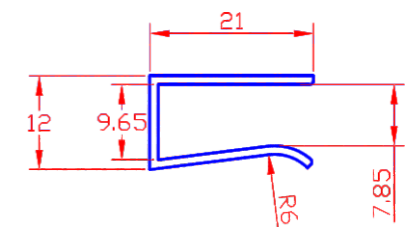
PC cover

Endcaps
1 with hole, 1 without hole

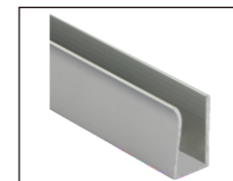
LS-ALUGL8MM

SPECIFICATIONS

- > Match Flexible LED Strips: Up to 8mm wide.
- > Material: Anodized Aluminum Extrusion.
- > Cover: None
- > Dimension: 12x21mm.
- > Length: 1 to 3 meter long.
- > Mounting: For 8mm glass shelf edge.



Standard accessories

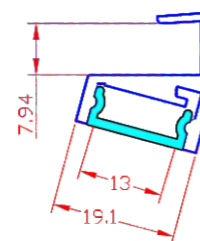


Profile

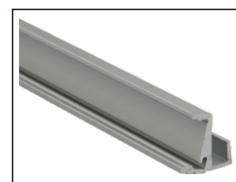


SPECIFICATIONS

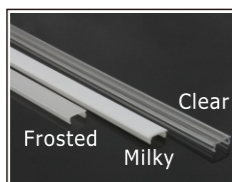
- > Match Flexible LED Strips: Up to 12mm wide.
- > Material: Anodized Aluminum Extrusion.
- > Cover: Transparent, Frosted, Milky PC cover.
- > Dimension: 7.9X19mm.
- > Length: 1 to 3 meter long.
- > Mounting: For 8mm glass shelf.



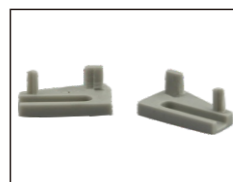
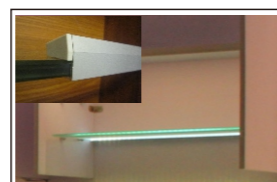
Standard accessories



Profile



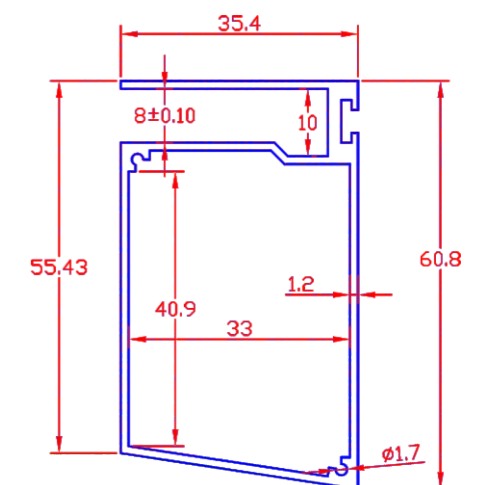
PC cover

Endcaps
1 with hole, 1 without hole

LS-ALUGL004

SPECIFICATIONS

- > Match Flexible LED Strips: 8mm to 10mm wide.
- > 220VAC driver can be put inside of the aluminum profile.
- > Material: Anodized Aluminum Extrusion.
- > Cover: None.
- > Dimension: 36x61mm
- > Length: 1 to 2 meter long.
- > Mounting: Glass shelf profile with LED Driver.



Standard accessories



Profile

Endcaps
1 with hole, 1 without hole