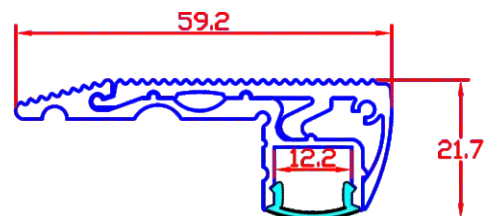


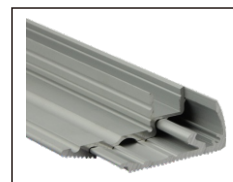
LS-ALUTR-C

SPECIFICATIONS

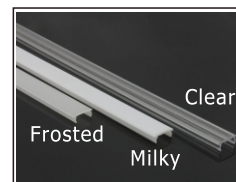
- > Match Flexible LED Strips: Up to 12mm wide.
- > Material: Anodized Aluminum Extrusion.
- > Cover: Transparent, Frosted, Milky PC cover.
- > Dimension: 59.2x21.7mm
- > Length: 1 to 2 meter long.
- > Mounting: Stair



Standard accessories



Profile



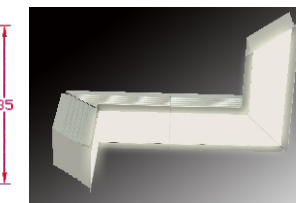
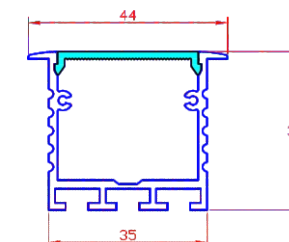
PC cover

Endcaps
1 with hole, 1 without hole

LS-ALUPL4435

SPECIFICATIONS

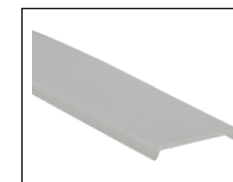
- > Match Flexible LED Strips: 2 lines of LED strip.
- > Material: Anodized Aluminum Extrusion.
- > Cover: Frosted PC cover.
- > Dimension: 44x35mm
- > Length: 1 to 2 meter long.
- > "Walk" along the wall in various directions. Support Straight Connection, L Connection.
- > Mounting: Recessed



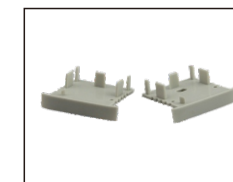
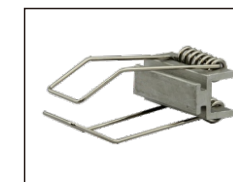
Standard accessories



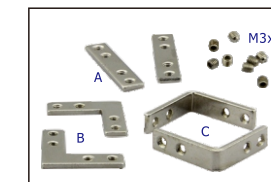
Profile



Frosted PC cover

Endcaps
1 with hole, 1 without hole

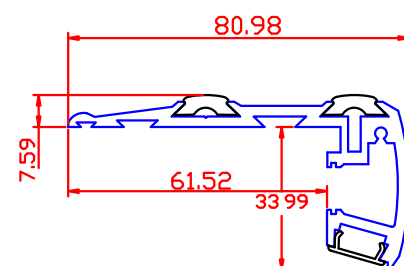
Metal clip

Connector A) Direct
B) 90° inside
C) 90° outside

LS-ALUSTEP-Z

SPECIFICATIONS

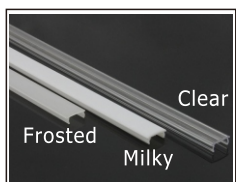
- > Match Flexible LED Strips: Up to 10mm wide.
- > Material: Anodized Aluminum Extrusion.
- > Cover: Transparent, Frosted, Milky PC cover.
- > Dimension: 81x41.6mm
- > Length: 1 to 2 meter long.
- > Mounting: Stair



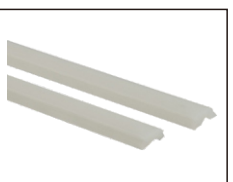
Standard accessories



Profile



PC cover



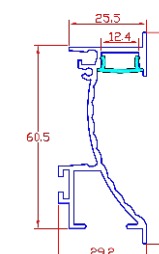
Anti-slip rubbers

Endcaps
1 with hole, 1 without hole

LS-ALUPL7029

SPECIFICATIONS

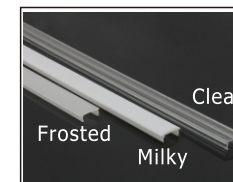
- > Match Flexible LED Strips: Up to 20mm wide.
- > Material: Anodized Aluminum Extrusion.
- > Cover: Milky PC cover.
- > Dimension: 70x29mm
- > Length: 1 to 2 meter long.
- > Color: Customized color can be ordered.
- > Mounting: Surface / Pendant



Standard accessories



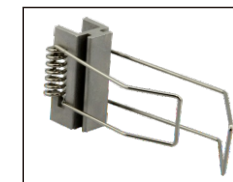
Profile



PC cover



Endcaps



Metal clip

